



WearCOAT[®] **SYSTEMS**

FLOORS

2021-2022



**COATINGS
FOR INDUSTRY**
WORKS. ALWAYS.

**Professional Floor Coatings
Wherever You Need Them**

50 YEARS OF SUCCESS

Coatings For Industry serves the needs of professionals, delivering unparalleled coating products across markets ranging from turbine engines, dirigibles, automotive and steel infrastructure, as well as offering a complete line of concrete floor coatings.

Developed in house and manufactured under our ISO 9001-2015 Quality Management System, CFI's products consistently deliver proven results across a full spectrum of applications.

When correctly specified and professionally applied, count on CFI products to meet or exceed expectations.



Extraordinarily durable Alseal® coatings from CFI are used on fan blades and hot-sections of turbine engines, supplied globally for use in flight and power generation turbines.



Among many highly specialized coatings products, one of our flexible coatings protect and seal dirigible airships.



After 20 winters of salt and ice, a CFI coating system demonstrated less than 2% corrosion on this Pittsburgh bridge; it was finally re-painted after 30 years in service.



Anti-graffiti coating systems provide years of gloss and color retention, even after repeatedly being cleaned with solvents.

Floor Coatings For Every Part of Your Building

CFI floor coating solutions are designed for wherever you need them.

WAREHOUSE MACHINE SHOP

Machine Shop
Ramps
Loading Docks
Locker Rooms

GROCERY FOOD BEVERAGE

Retail
Kitchen
Bakery/Deli
Fridge/Freezer

FIRE STATION

Parking
Offices
Dorm/Bath

OFFICE BUILDING

Entry/Hallway
Offices
HVAC/Mechanical Room
Restrooms

AIRPORT

Walkways
Bathrooms
Baggage Handling
Hangars

RETAIL STORES

Warehouse Floor
Bathrooms
Entry

SCHOOLS

Classrooms
Labs
Kitchen
Fridge/Freezer
HVAC/Boiler Room
Bathrooms

AUTO SALES & SERVICE

Showroom
Service Center
Restrooms
Battery Storage

HEALTHCARE ANIMAL CARE

Kennel
Waiting Room
Exam Room
Operating Room
Restrooms





Meeting the Needs of a Fire Station Floor

The equipment in this busy northeast firehouse rolls on short notice, and returns hot, wet and heavy. It's brutal on the floor.

The first contractor to tackle this flooring job apparently made decisions to minimize costs. Over top of the old, poorly prepared concrete went a no-name epoxy coating. Within weeks, those hot tires not only marred the surface, they pulled the coating right off the concrete.

An experienced CFI contractor was called in and asked CFI for help. We teamed up to recommend a solution, including fully grinding off all previous coatings. That proved to be the right thing to do.

After prep, a silver grey prime coat of WearCOAT 440 was applied at 20 mils. While still wet, 40/60 silica sand was broadcast to refusal. The next day, the sand was vacuumed off, then a lock coat of WearCOAT 440 was squeegeed and back-rolled at 20 mils. A WearCOAT 100 top coat was then applied at 12 mils. Finally, floor stripes were applied using WearCOAT 100 in Safety Yellow at 8 mils with aluminum oxide broadcast for slip resistance.

The result: no tire marks, no failed adhesion, not even a tire impression in the coatings. That success brought a letter from the facility manager...

"We needed this floor turned around, finished on time, and without issue. We appreciate everything CFI did to assure it was done right."

Kent R.
Firehouse Facility Manager



Need Training?

We offer our Floor Coating Technology & Application Training course several times per year. This two-day course delivers detailed information about when to consider applying which products and systems over a broad spectrum of applications. Along with classroom time, you'll apply real coatings to learn proper technique. This course is ideal for applicators, foremen, managers and owners who want to expand their knowledge base and help assure consistent, successful application. Custom training is also available. Search "Training" on our website to see when the next course will be given.

WearCOAT® SYSTEMS

Thin Film



Provides basic protection of concrete floors in areas not subject to heavy traffic or high impact environments. With light to moderate people and/or push-cart traffic, these coatings offer many color combinations, striping and excellent durability. Film thickness ranges from 8 mils to 20 mils.

System	Mils	Low Odor	UV Resistance	Abrasion Resistance	Chemical Resistance	Quick RTS	Gloss	Satin
TF-1	8						X	
TF-2	15	X					X	
TF-3	10	X		X		X	X	
TF-4	10		X		X	X	X	X
TF-5	20	X			X		X	
TF-6	20		X	X	X		X	X
TF-7	20	X	X	X	X	X	X	
TF-8	20	X	X	X	X		X	

MicroTech Flake Broadcast



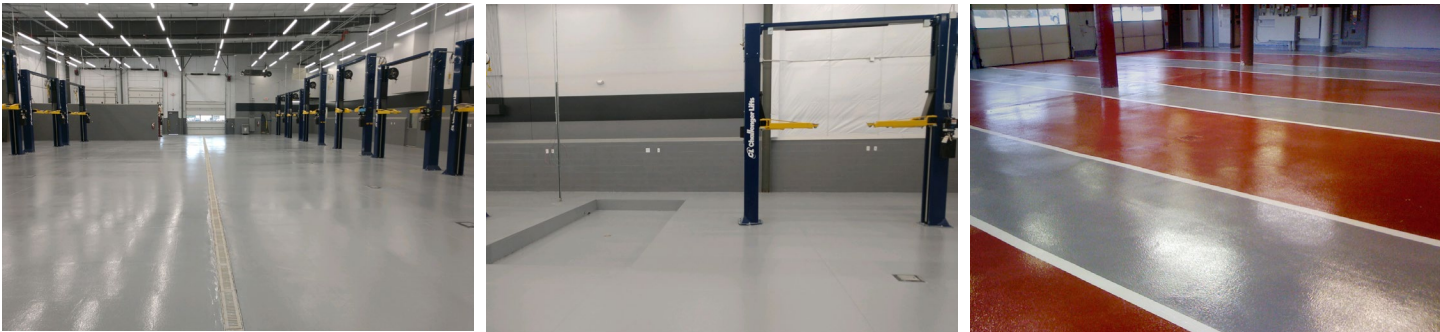
Offers aesthetically pleasing seamless finish well suited for office, retail, commercial and institutional settings for both performance and design. The small speckle flakes deliver a clean, modern look that are typically with satin finish, though gloss is available in some systems if desired.

System	Mils	Low Odor	UV Resistance	Abrasion Resistance	Chemical Resistance	Quick RTS	Gloss	Satin
MTF-1	20	X						X
MTF-2	25	X					X	
MTF-3	25			X	X		X	X
MTF-4	15	X	X			X		X
MTF-5	20	X	X	X		X	X	
MTF-6	20		X	X	X		X	X
MTF-7	15	X	X	X	X		X	X
MTF-8	20	X	X	X	X	X		X



WearCOAT® SYSTEMS

Sand Broadcast Pigmented



Highly desirable for protecting concrete in potentially high-impact environments, especially where there is heavy wheeled traffic or blunt objects like tools may drop. The coating helps protect the concrete as impact forces spread laterally through the coating system. In addition to the protection, the sand broadcast also provides a slip-resistant textured surface. Ideal for high tow-motor traffic, heavy vehicular traffic like trucks or aircraft, and service-type areas where tools are used.

System	Mils	Low Odor	UV Resistance	Abrasion Resistance	Chemical Resistance	Quick RTS	Resists Hot Tire Marks	Gloss	Satin
SBP-1	60	X						X	
SBP-2	60	X	X	X		X		X	
SBP-3	60		X	X	X		X	X	X
SBP-4	65	X			X			X	
SBP-5*	65		X	X	X		X	X	X
SBP-6	65	X	X	X	X		X	X	X

* SBP-5 offers a smoother, more attractive, architectural finish with slightly less non-slip.

Double-Sand Broadcast



Designed for environments where the longest-lasting concrete protection is needed. Works best in extra-high-impact environments such as where heavy trucks, heavy aircraft and other industrial motor equipment are active. This system is ideal for high-volume auto dealership service areas. Double sand protection spreads impact forces laterally through the coating system. Offers the same textured slip-resistant surface as SBP.

System	Inches	Low Odor	UV Resistance	Abrasion Resistance	Chemical Resistance	Quick RTS	Resists Hot Tire Marks	Gloss	Satin
DSB-1	1/8"	X						X	
DSB-2	1/8"	X	X	X		X		X	
DSB-3	1/8"		X	X	X		X	X	X
DSB-4	1/8"	X			X			X	
DSB-5*	1/8"		X	X	X		X	X	X
DSB-6	1/8"	X	X	X	X		X	X	X

* DSB-5 offers a smoother, more attractive, architectural finish with slightly less non-slip.

WearCOAT® SYSTEMS

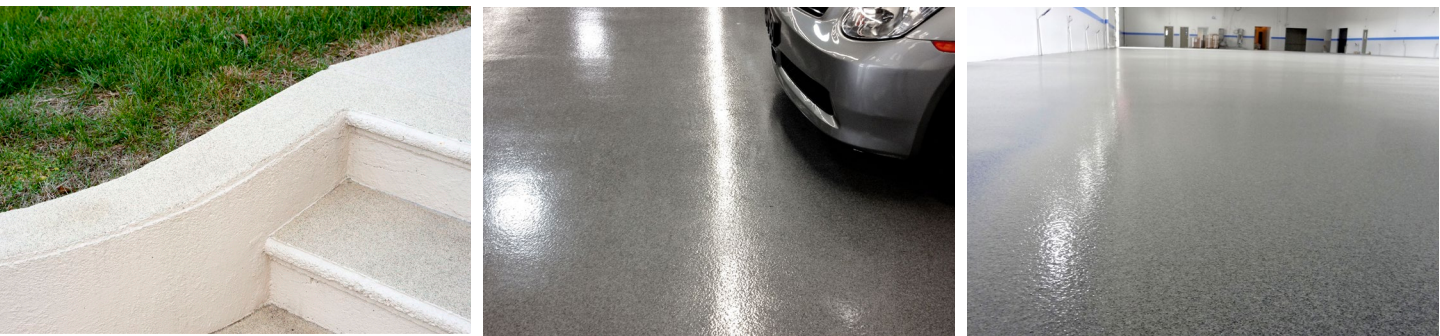
Flake Broadcast



Through many available combinations of flake colors and sizes, this popular surface offers endless design possibilities. The varied appearance can help hide user marks in the floor. A moderately slip-resistant surface is typical. The flake is ordered separately per your specification.

System	Mils	Low Odor	UV Resistance	Abrasion Resistance	Chemical Resistance	Quick RTS	Resists Hot Tire Marks	Gloss	Satin
FB-1	50	X						X	
FB-2	50	X	X	X		X		X	
FB-3	50		X	X	X		X	X	X
FB-4	50		X	X	X	X	X	X	X
FB-5	50	X	X	X	X		X	X	X
FB-6	50	X	X	X	X		X	X	X

Double-Quartz Broadcast



Designed for environments where the longest-lasting concrete protection is needed, but where color design is important. Color in the broadcast aggregate can deliver unique designs in extra-high-impact environments where heavy trucks, heavy aircraft and other industrial motor equipment are active. Delivers the same impact protection as our DSB Systems where the the force is spread laterally to protect the concrete while also offering a textured, slip-resistant surface.

System	Inches	Low Odor	UV Resistance	Abrasion Resistance	Chemical Resistance	Quick RTS	Resists Hot Tire Marks	Gloss	Satin
DQB-1	1/8"	X						X	
DQB-2	1/8"	X	X	X		X		X	
DQB-3	1/8"		X	X	X		X	X	X
DQB-4*	1/8"		X	X	X		X	X	X
DQB-5	1/8"	X	X	X	X		X	X	X
DQB-6	1/8"	X	X	X	X		X	X	X

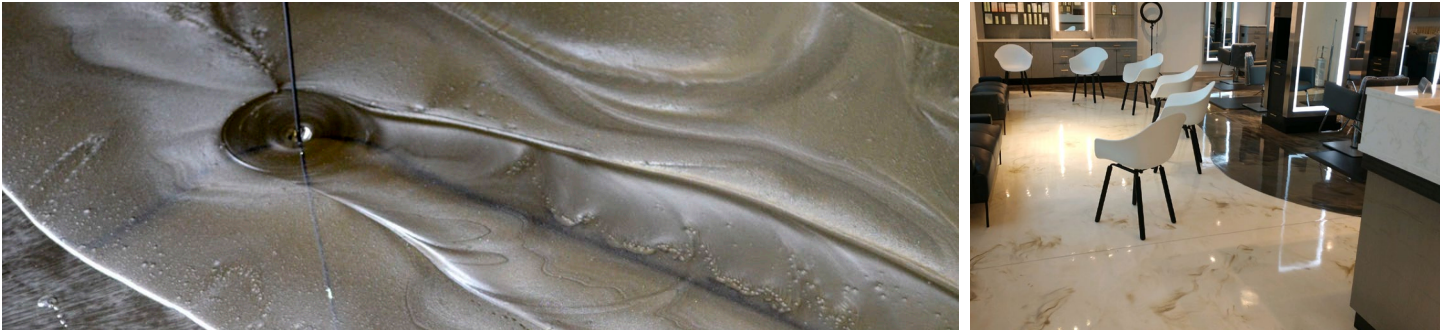
* DQB-4 offers a smoother, more attractive, architectural finish with slightly less non-slip.



WearCOAT®SYSTEMS

WearCOAT®SYSTEMS

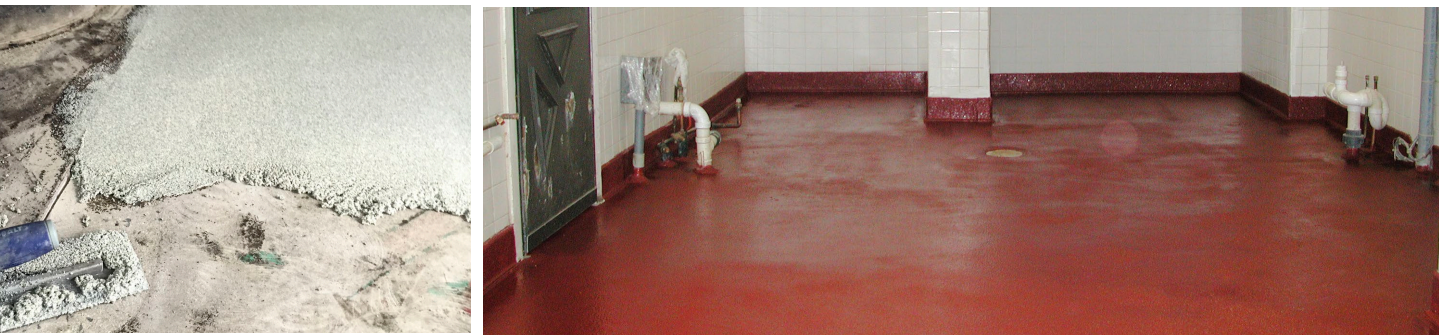
Metallic Pigmented



Offers a unique and variegated/marbled style in appearance with an exciting metallic luster. Proper application can yield a highly attractive floor, even over concrete that is not in optimum condition. Excellent alternative for concrete floors unable to evenly accept stain or polishing. Many color combinations are available ranging from conservative to vivid.

System	Mils	Low Odor	UV Resistance	Abrasion Resistance	Chemical Resistance	Quick RTS	Resists Hot Tire Marks	Gloss	Satin
MP-1	25	X	X					X	
MP-2	25	X	X	X		X		X	
MP-3	30		X	X	X		X	X	X
MP-4	30		X	X	X	X	X	X	X
MP-5	30	X	X	X	X		X	X	X
MP-6	30	X	X	X	X		X	X	X

Trowel Resurfacer



An epoxy mortar used to repair significantly damaged areas. Usually used on concrete prior to applying a high performance coating system; can also be used for patch repair without over-coating. Can be applied with hand tools, or with power trowels for resurfacing large areas. Assures extreme compressive strength and impact resistance in patched areas.

System	Inches	Low Odor	UV Resistance	Abrasion Resistance	Chemical Resistance	Quick RTS	Resists Hot Tire Marks	Gloss	Satin
TR-1	1/4"	X						X	
TR-2	1/4"	X	X	X				X	
TR-3	1/4"		X	X	X		X	X	X

Need crack or gap filler? Check out WearCOAT-800 and our new ultra-quick WearCOAT-820 to help with surface prep and repair.

Safety Grip



Specifically formulated for anti-slip properties utilizing aluminum oxide filler with varying levels of high-build, non-slip products. All provide extraordinary wear resistance. Multiple grades of filler and resins combine to provide varying levels from barefoot use to SG-4 used on aircraft carrier flight decks.

System	Inches	Low Odor	Barefoot	UV Resistance	Abrasion Resistance	Chemical Resistance	COF
SG-LP	BR*	X	X	X	X		.78
SG-1	BR*				X		1.17
SG-3	BR*				X	X	1.05
SG-4	BR*	X			X	X	1.17

BR* – Broad range of depth in the coating’s peaks and valleys; they can vary considerably. The applicator has significant control over depth and peak-valley height.

Urethane Cement Slurry

Thick urethane self-leveling slurry that is best suited for areas that experience thermal shock, such as facilities utilizing hot water or steam wash-down. This water-based technology offers extraordinary impact resistance, and is highly resistant to moisture vapor transmission pressure forces from below the slab.

System	Mils	Low Odor	UV Resistance	Abrasion Resistance	Chemical Resistance	Quick RTS	Gloss	Satin
UCS-1	60	X		X	X	X		X
UCS-2	100	X	X	X		X	X	

Urethane Cement Trowel

Twice as thick as the UCS System and applied via trowel, this water-based system otherwise offers the same properties. Best for highly damaged floors, or where the thicker product is needed to provide slopes toward drains.

System	Inches	Low Odor	UV Resistance	Abrasion Resistance	Chemical Resistance	Quick RTS	Gloss	Satin
UCT-1	3/16"	X		X	X	X		X
UCT-2	1/4"	X	X	X		X	X	



		Retail Store	Grocery Store	Warehouse	Restaurant	Commercial Kitchen	Cold Room / Freezer	Restrooms	Loading Dock	Safety			Automotive		School	Laboratory	Hospital	
		Floor	Floor	Floor	Dining Room Floor	Floor	Floor	Floor	Platform	Walkways	Ramps	Platforms	Showroom	Service Center	Common Areas	Floor	Hallway	ER/OR
Thin Film																		
TF-1	Primer / WC491			■ ■														
TF-2	Primer / WC440	■	■	■			■										■	
TF-3	Primer / WC2035	■ ■	■ ■	■ ■											■		■	
TF-4	Primer / WC100	■ ■	■ ■	■ ■				■					■		■	■ ■	■	■ ■
TF-5	Primer / WC440 / WC570															■ ■		■ ■
TF-6	Primer / WC440 / WC100	■ ■	■ ■	■ ■ ■				■					■		■	■ ■ ■	■	■ ■ ■
TF-7	Primer / WC2020 / WC2330	■ ■	■ ■	■ ■ ■				■					■		■	■ ■ ■	■	■ ■ ■
TF-8	Primer / WC440 / WC2330	■ ■	■ ■	■ ■ ■				■					■		■	■ ■ ■	■	■ ■ ■
MicroTech Flake Broadcast																		
MTF-1	Primer / WC460 + MicroTech Flake / WC3015	■ ■	■ ■		■ ■										■ ■		■ ■	
MTF-2	Primer / WC460 + MicroTech Flake / WC481HP	■ ■	■ ■		■ ■			■							■ ■	■	■ ■	■
MTF-3	Primer / WC460 + MicroTech Flake / WC100	■ ■	■ ■		■ ■			■					■		■ ■	■ ■ ■	■ ■	■ ■ ■
MTF-4	Primer / WC2020 + MicroTech Flake / WC3015	■ ■ ■	■ ■ ■		■ ■ ■										■ ■ ■		■ ■	
MTF-5	Primer / WC2020 + MicroTech Flake / WC2035	■ ■ ■	■ ■ ■		■ ■ ■										■ ■ ■	■ ■	■ ■ ■	■ ■
MTF-6	Primer / WC2020 + MicroTech Flake / WC100	■ ■ ■	■ ■ ■		■ ■ ■			■					■ ■ ■		■ ■ ■	■ ■ ■	■ ■ ■	■ ■ ■
MTF-7	Primer / WC2020 + MicroTech Flake / WC2330	■ ■ ■	■ ■ ■		■ ■ ■			■					■ ■ ■		■ ■ ■	■ ■ ■	■ ■ ■	■ ■ ■
MTF-8	Primer / WC481HP + MicroTech Flake / WC2332	■ ■ ■	■ ■ ■		■ ■ ■			■					■ ■ ■		■ ■ ■	■ ■ ■	■ ■ ■	■ ■ ■
Metallic Pigmented																		
MP-1	Primer / WC440 Blk / WC481HP + Metallic Pigment	■ ■	■ ■		■ ■			■							■ ■	■	■ ■	■
MP-2	Primer / WC2020 Blk / WC2035 + Metallic Pigment	■ ■	■ ■		■ ■										■ ■ ■	■ ■	■ ■ ■	■ ■
MP-3	Primer / WC440 Blk / WC481HP + Metallic Pigment / WC100	■ ■ ■	■ ■ ■		■ ■ ■			■					■ ■		■ ■ ■	■ ■ ■	■ ■ ■	■ ■ ■
MP-4	Primer / WC2020 Blk / WC2035 + Metallic Pigment / WC100	■ ■ ■	■ ■ ■		■ ■ ■			■					■ ■ ■		■ ■ ■	■ ■ ■	■ ■ ■	■ ■ ■
MP-5	Primer / WC2020 Blk / WC481HP + Metallic Pigment / WC2330	■ ■ ■	■ ■ ■		■ ■ ■			■					■ ■ ■		■ ■ ■	■ ■ ■	■ ■ ■	■ ■ ■
MP-6	Primer / WC2020 Blk / WC2035 + Metallic Pigment / WC2330	■ ■ ■	■ ■ ■		■ ■ ■			■					■ ■ ■		■ ■ ■	■ ■ ■	■ ■ ■	■ ■ ■
Flake Broadcast																		
FB-1	Primer / WC440 + Flake / WC481HP	■ ■	■ ■		■										■ ■	■	■ ■	■
FB-2	Primer / WC2020 + Flake / WC2035	■ ■ ■	■ ■ ■		■ ■										■ ■ ■	■ ■	■ ■ ■	■ ■
FB-3	Primer / WC440 + Flake / WC100	■ ■	■ ■		■								■	■	■ ■ ■	■ ■ ■	■ ■ ■	■ ■ ■
FB-4	Primer / WC2020 + Flake / WC100	■ ■ ■	■ ■ ■		■ ■								■ ■ ■	■	■ ■ ■	■ ■ ■	■ ■ ■	■ ■ ■
FB-5	Primer / WC440 + Flake / WC481HP / WC2330	■ ■ ■	■ ■ ■		■ ■								■ ■ ■	■	■ ■ ■	■ ■ ■	■ ■ ■	■ ■ ■
FB-6	Primer / WC2020 + Flake / WC2035 / WC2330	■ ■ ■	■ ■ ■		■ ■								■ ■ ■	■	■ ■ ■	■ ■ ■	■ ■ ■	■ ■ ■
Sand Broadcast Pigmented																		
SBP-1	Primer / WC440 + Sand / WC440					■	■ ■		■	■		■						
SBP-2	Primer / WC2020 + Sand / WC2035					■ ■	■ ■ ■		■	■		■						
SBP-3	Primer / WC440 + Sand / WC100					■ ■		■ ■	■	■		■		■ ■				
SBP-4	Primer / WC440 + Sand / WC440 / WC570					■ ■		■										
SBP-5	Primer / WC440 + Sand / WC440 / WC100					■ ■		■ ■		■				■ ■				
SBP-6	Primer / WC440 + Sand / WC440 / WC2330					■ ■		■ ■		■				■ ■				
Double Sand Broadcast																		
DSB-1	Primer / WC440 + Sand / WC440 + Sand / WC440					■			■			■						
DSB-2	Primer / WC2020 + Sand / WC2020 + Sand / WC2035					■												
DSB-3	Primer / WC440 + Sand / WC440 + Sand / WC100					■			■ ■			■ ■		■ ■ ■				
DSB-4	Primer / WC440 + Sand / WC440 + Sand / WC440 / WC570					■												
DSB-5	Primer / WC440 + Sand / WC440 + Sand / WC440 / WC100					■								■ ■ ■				
DSB-6	Primer / WC440 + Sand / WC440 + Sand / WC440 / WC2330					■								■ ■				
Double Quartz Broadcast																		
DQB-1	Primer / WC440 + Quartz / WC440 + Quartz / WC481HP					■		■ ■	■	■		■						
DQB-2	Primer / WC2020 + Quartz / WC2020 + Quartz / WC2035					■ ■				■								
DQB-3	Primer / WC440 + Quartz / WC440 + Quartz / WC100					■ ■		■ ■ ■	■ ■	■		■ ■		■ ■ ■				
DQB-4	Primer / WC440 + Quartz / WC440 + Quartz / WC481HP / WC100					■ ■		■ ■ ■		■				■ ■ ■				
DQB-5	Primer / WC440 + Quartz / WC440 + Quartz / WC2035 / WC2330					■ ■		■ ■ ■		■				■ ■				
DQB-6	Primer / WC440 + Quartz / WC440 + Quartz / WC481HP / WC2330					■ ■		■ ■ ■		■				■ ■				
Trowel Resurfacer																		
TR-1	Primer / WC805 /WC440 / WC440					■ ■												
TR-2	Primer / WC805 /WC440 / WC2035					■ ■												
TR-3	Primer / WC805 /WC440 / WC100					■ ■			■ ■					■ ■ ■				
Urethane Cement Slurry																		
UCS-1	WC720					■ ■	■ ■ ■											
UCS-2	WC720 + Sand / WC2035					■ ■ ■												
Urethane Cement Trowel																		
UCT-1	WC735					■ ■ ■	■ ■ ■											
UCT-2	WC735 + Sand / WC2035					■ ■ ■												
Safety Grip																		
SG-LP	Primer / SG-LP								■	■ ■	■							
SG-1	Primer / SG-1								■	■ ■ ■	■ ■	■						
SG-3	Primer / SG-3								■ ■ ■		■ ■ ■	■ ■ ■						
SG-4	Primer / SG-4								■ ■ ■		■ ■ ■	■ ■ ■						

WearCOAT® Flooring Systems		<div><div><div></div><div></div><div></div></div><div>GOOD BETTER BEST</div></div>			Veterinary Clinic			Water Treatment	Chemical Process	Machine Shop	Heavy Industrial	Fire Station	Mechanical Room	Food Processing	Pharmaceutical	Hangar	Transit		Office	Car Wash
					Waiting Room	Exam Room	Kennel	Plant Floor	Plant Floor	Floor	High Traffic Floor	Floor	Floor	Floor	Plant Floor	Plant Floor	Floor	Terminal	Platform	Floor
Thin Film																				
TF-1	Primer / WC491			■	■	■	■					■■							■	
TF-2	Primer / WC440				■							■								
TF-3	Primer / WC2035	■	■■	■								■■	■	■■				■		
TF-4	Primer / WC100	■	■■	■	■■	■■		■				■■		■■	■■			■		
TF-5	Primer / WC440 / WC570				■■	■■						■■		■■						
TF-6	Primer / WC440 / WC100	■	■■■	■■	■■■	■■■		■			■	■■■	■	■■■	■■■			■		
TF-7	Primer / WC2020 / WC2330	■	■■■	■■	■■■	■■■		■			■	■■■	■	■■■	■■			■		
TF-8	Primer / WC440 / WC2330	■	■■■	■■	■■■	■■		■			■	■■■	■	■■■	■■			■		
MicroTech Flake Broadcast																				
MTF-1	Primer / WC460 + MicroTech Flake / WC3015																	■■		
MTF-2	Primer / WC460 + MicroTech Flake / WC481HP		■■															■■		
MTF-3	Primer / WC460 + MicroTech Flake / WC100		■■■	■■		■■■								■■■				■■		
MTF-4	Primer / WC2020 + MicroTech Flake / WC3015	■														■■		■■		
MTF-5	Primer / WC2020 + MicroTech Flake / WC2035	■■	■■											■■		■■■		■■■		
MTF-6	Primer / WC2020 + MicroTech Flake / WC100	■■	■■■	■■		■■■								■■■	■■■	■■■		■■■		
MTF-7	Primer / WC2020 + MicroTech Flake / WC2330	■■	■■■	■■		■■								■■	■■■	■■■		■■■		
MTF-8	Primer / WC481HP + MicroTech Flake / WC2332	■■	■■■	■■		■■								■■	■■■	■■■		■■■		
Metallic Pigmented																				
MP-1	Primer / WC440 Blk / WC481HP + Metallic Pigment	■■																■■		
MP-2	Primer / WC2020 Blk / WC2035 + Metallic Pigment	■■														■■		■■■		
MP-3	Primer / WC440 Blk / WC481HP + Metallic Pigment / WC100	■■■														■■■		■■■		
MP-4	Primer / WC2020 Blk / WC2035 + Metallic Pigment / WC100	■■■														■■■		■■■		
MP-5	Primer / WC2020 Blk / WC481HP + Metallic Pigment / WC2330	■■■														■■■		■■■		
MP-6	Primer / WC2020 Blk / WC2035 + Metallic Pigment / WC2330	■■■														■■■		■■■		
Flake Broadcast																				
FB-1	Primer / WC440 + Flake / WC481HP	■■																■■		
FB-2	Primer / WC2020 + Flake / WC2035	■■		■												■■		■■■		
FB-3	Primer / WC440 + Flake / WC100	■■■		■■						■■					■■■	■■■		■■■		
FB-4	Primer / WC2020 + Flake / WC100	■■■		■■						■■					■■■	■■■		■■■		
FB-5	Primer / WC440 + Flake / WC481HP / WC2330	■■■		■■						■					■■	■■■		■■■		
FB-6	Primer / WC2020 + Flake / WC2035 / WC2330	■■■		■■						■					■■	■■■		■■■		
Sand Broadcast Pigmented																				
SBP-1	Primer / WC440 + Sand / WC440				■■			■	■				■				■■		■■	
SBP-2	Primer / WC2020 + Sand / WC2035			■■				■	■				■■	■■			■■			
SBP-3	Primer / WC440 + Sand / WC100			■■■	■■■			■■	■■	■■■			■■	■■■			■■			
SBP-4	Primer / WC440 + Sand / WC440 / WC570			■■	■■			■	■				■■■	■■						
SBP-5	Primer / WC440 + Sand / WC440 / WC100				■■■			■■	■■	■■■			■■	■■■			■■			
SBP-6	Primer / WC440 + Sand / WC440 / WC2330				■■■			■■	■■	■■			■■	■■■			■■			
Double Sand Broadcast																				
DSB-1	Primer / WC440 + Sand / WC440 + Sand / WC440							■■	■■											
DSB-2	Primer / WC2020 + Sand / WC2020 + Sand / WC2035							■■	■■											
DSB-3	Primer / WC440 + Sand / WC440 + Sand / WC100							■■■	■■■	■■■										
DSB-4	Primer / WC440 + Sand / WC440 + Sand / WC440 / WC570							■■	■■											
DSB-5	Primer / WC440 + Sand / WC440 + Sand / WC440 / WC100							■■■	■■■	■■■										
DSB-6	Primer / WC440 + Sand / WC440 + Sand / WC440 / WC2330							■■■	■■■	■■										
Double Quartz Broadcast																				
DQB-1	Primer / WC440 + Quartz / WC440 + Quartz / WC481HP							■■	■■								■■			
DQB-2	Primer / WC2020 + Quartz / WC2020 + Quartz / WC2035							■■	■■					■■			■■			
DQB-3	Primer / WC440 + Quartz / WC440 + Quartz / WC100	■■■		■■■				■■■	■■■	■■■				■■■			■■			
DQB-4	Primer / WC440 + Quartz / WC440 + Quartz / WC481HP / WC100			■■■				■■■	■■■	■■■				■■■			■■			
DQB-5	Primer / WC440 + Quartz / WC440 + Quartz / WC2035 / WC2330	■■■		■■■				■■■	■■■	■■■				■■■			■■			
DQB-6	Primer / WC440 + Quartz / WC440 + Quartz / WC481HP / WC2330							■■■	■■■	■■■				■■■						
Trowel Resurfacer																				
TR-1	Primer / WC805 /WC440 / WC440							■■	■■				■							
TR-2	Primer / WC805 /WC440 / WC2035							■■	■■				■■	■■						
TR-3	Primer / WC805 /WC440 / WC100							■■■	■■■	■■■			■■	■■■						
Urethane Cement Slurry																				
UCS-1	WC720																			
UCS-2	WC720 + Sand / WC2035							■■	■■				■■■	■■					■■■	
Urethane Cement Trowel																				
UCT-1	WC735							■■	■■				■■						■■	
UCT-2	WC735 + Sand / WC2035							■■	■■				■■■	■■					■■■	
Safety Grip																				
SG-LP	Primer / SG-LP																			
SG-1	Primer / SG-1																■■		■■	
SG-3	Primer / SG-3																■■■		■■■	
SG-4	Primer / SG-4																			

WearCOAT® Product Descriptions

SURFACERS

New! WearCOAT 720

Self-leveling urethane concrete slurry surfacer. Applied at 1/8" to 3/16" for use in thermal or mechanical shock areas, this new product is highly moisture resistant. Provides protection from harsh chemicals and abrasion, and anti-microbial agents help inhibit bacteria growth. Multi-component kits, available in a variety of colors. (VOC Zero)

New! WearCOAT 735

Trowel-applied urethane concrete mortar surfacer. Applied at 1/4" to 3/8" for use in thermal or mechanical shock areas. Resists harsh chemicals and abrasion. Good for creating slopes toward drains. Anti-microbial agents help inhibit bacteria growth. Multi-component kits, available in a variety of colors. (VOC Zero)

WearCOAT 800

Two component high build, high solids epoxy paste designed to fill small cracks, voids, and to smooth rough concrete surfaces prior to coating. Color is blue-gray, sold in 2-gal kits. (VOC Zero)

WearCOAT 805

Trowel applied, aggregate filled epoxy floor surfacer. Applied at 1/4" for use indoors or out. Highly resistant to impact and wear. Pigmented. Multi-component kits. (VOC Zero)

New! WearCOAT 820

Fast-setting two-component modified urethane for repair of spalls, large cracks or joints. Quick cure typically allows grinding in under 20 minutes. (VOC <6 g/l)

PRIMERS

WearCOAT 1020

Thin viscosity, low odor, water-based, penetrating epoxy primer. Effective in high humidity; good resistance to acids and alkalis. Quick drying. Two-component kits. (VOC 115 g/l)

WearCOAT 490

Highly surface-tolerant, solvent-based polyamide epoxy primer. Excellent, even for oil-soaked, damp concrete surfaces, or surfaces that cannot be well-prepared. Resists chemicals, including battery acids; designed for harsh environments. Two-component kits. (VOC 100-340 g/l)

WearCOAT 1080

100% solids epoxy primer designed to reduce moisture vapor transmission. Highly effective, works with all topcoats. May be applied to "green" concrete 7-10 days after pour. Two-component kits. (VOC Zero)

New! WearCOAT 2015

Fast setting, two-component, polyaspartic primer/sealer. It's a high build product with superior adhesion for application directly on properly prepared concrete, providing an excellent option for jobs that need fast return-to-service. Low odor, high solids, UV stable. (VOC <100 g/l)

SAFETY GRIP FLOORS

WearCOAT SG-LP

Water-based, low profile, anti-slip epoxy floor coating. OK to apply in wet areas; for heavy pedestrian, even barefoot traffic, including pools, water parks, locker rooms, docks. Pigmented. Two-component kits with pre-mixed aggregate. (VOC 60 g/l)

WearCOAT SG-1

Epoxy ester, anti-slip concrete, or wood or metal deck coating. For areas of heavy pedestrian grade traffic where chemical resistance to gasoline, oils, acids, alkalis are key. Pigmented. Single component with pre-mixed aggregate. (VOC 100 g/l)

WearCOAT SG-3

Aggressive, non-skid epoxy coating. Provides excellent chemical resistance, superior traction for personnel and equipment. Ideal for vehicular traffic areas needing durable, heavy duty anti-slip surface. Pigmented. Two-component kits with pre-mixed aggregate. (VOC 250 g/l)

WearCOAT SG-4

Extreme duty, non-skid epoxy. Designed for military, marine and industrial use, provides highest possible anti-slip. Rapid cure, self-sealing. Superior chemical resistance, even fuels and hydraulic fluids. Pigmented. Two-component kits with pre-mixed aggregate. (VOC Zero)

MID- AND TOP-COATS

WearCOAT 100

Ultra-performance aliphatic polyester-type urethane top coat. Unparalleled finish coat offers long-lasting color-retention, gloss, abrasion, and chemical resistance. Superior resistance to tire staining. Effective over virtually any properly prepared surface. Clear or pigmented. Two-component kits. (VOC 250-340)

WearCOAT 440

100% solids, high build, high gloss epoxy mid or top coat. Works across broad spectrum of indoor applications. Highly durable, resistant to amine blush. Clear or pigmented. Broadcast-ready. Two-component kits. (VOC Zero)

WearCOAT® Product Descriptions

WearCOAT 440FS

100% solids, high build, epoxy mid or top coat designed to set up quickly on jobs in cooler temps or quicker return to service. Works across broad spectrum of indoor applications. Highly durable, resistant to amine blush. Clear or pigmented. Broadcast-ready. Two-component kits. (VOC Zero)

WearCOAT 460

100% solids, high-viscosity, extra high-build epoxy mid or top coat. Formulated for deep self-leveling to help cover substrate imperfections. Pigmented only. Highly resistant to amine blush. Broadcast-ready. Two-component kits. (VOC Zero)

New! WearCOAT 474

100% solids, epoxy coat with significant elongation. Acts as a membrane to help bridge small cracks and help hide further concrete cracking. Mid-coat only, clear or pigmented. Available for broadcast. Two-component kits. (VOC Zero)

WearCOAT 481HP

100% solids, high build, reduced yellowing epoxy top coat. Ideal for indoor decorative floors exposed to window or door sunlight. Clear. Broadcast-ready. Two-component kits. (VOC Zero)

WearCOAT 491

High build, polyamide cured novolac epoxy top coat. Offers excellent abrasion and chemical resistance for demanding applications as in steel mills, paper mills, refineries, battery storage areas. Pigmented. Two-component kits. (VOC 100-340 g/l)

WearCOAT 570

High build, high-gloss, 100% solids novolac epoxy top coat. Offers extreme chemical resistance for severe applications such as battery storage, chemical processing, spill containment areas. Broadcast-ready. Pigmented. Two-component kits. (VOC Zero)

WearCOAT 2020

Fast-setting, UV-stable polyaspartic midcoat. Excellent intermediate or broadcast coat where quick return to service and low-odor are key. Proven performer, cure time typically in under 1 hour. Broadcast-ready. Clear or pigmented. Two-component kits. (VOC Zero)

WearCOAT 2035

UV-stable, 90% solids, two-component polyaspartic topcoat. 2-4 hour cure virtually eliminates roller overlap marks, yet offers quick return to service. Excellent UV resistance and color stability. Clear or pigmented. Two-component kits. (VOC Zero)

New! WearCOAT 2330

Two-component, thin-film, high wear urethane top coat. This new technology topcoat with full gloss finish is ideal for use in heavy traffic environments where low odor, low VOC and high UV stability are key. Gloss finish. (VOC <5 g/l)

New! WearCOAT 2332

Fast set version of WearCOAT 2330 designed for use where fast return to service is critical. It is a two-component, thin-film, high wear urethane. It is the latest technology in low odor, low VOC topcoats for use in heavy traffic environments. For indoor application in controlled environments. Satin finish. (VOC <5 g/l)

New! WearCOAT 2345

Three component, thin-film, high solids, UV stable, high-wear urethane coating sold with proprietary aggregate mixed in. Satin finish only offering modest anti-slip texture. This latest technology topcoat is ideal for use in heavy traffic environments where low odor and low VOC is required. (VOC <5 g/l)

WearCOAT 3015

Water-based, low odor, aliphatic urethane top coat. Use indoors or out; excellent color retention. Good abrasion and chemical resistance. Quick-dry, satin finish. Clear or pigmented. Single component. (VOC 250 g/l)

WearCOAT 3020

Water-based lithium silicate densifier that can be polished to create a smooth, natural-looking concrete surface that's durable and attractive. Permanently bonds with concrete, preventing "dusting" and improves resistance to water, chemicals, and abrasion. Ideal for large, polished floors such as warehouse retail locations. (VOC Zero)

WearCOAT 3030

Water-based sealer gives smooth or exposed aggregate concrete a functional, natural-looking barrier against spills and stains. (VOC 100 g/l)

WearCOAT 3045

Water-based darkening sealer gives a "wet look" to smooth or exposed aggregate, even flagstone. Provides a durable, functional barrier against spills and stains. (VOC 35 g/l)



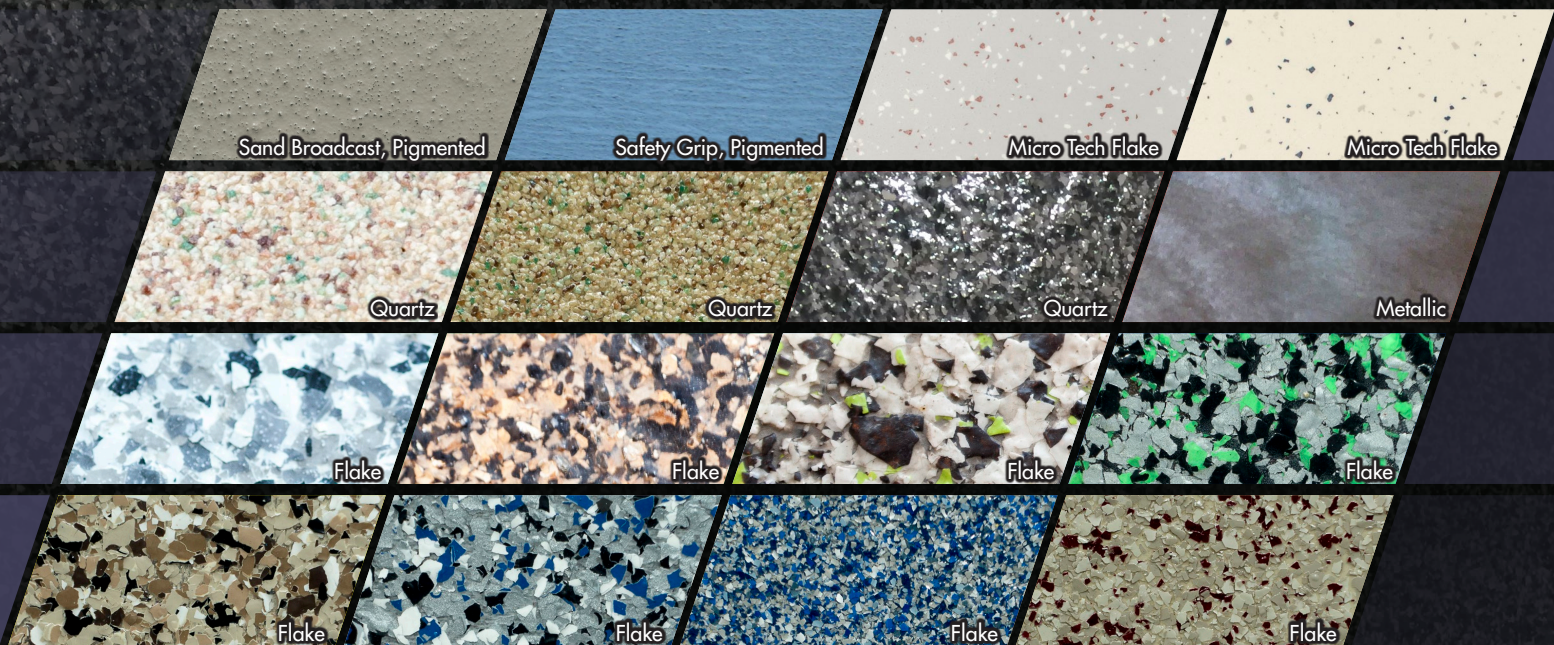
Need Tech Support?

Whether it's a question on product selection or problem on a job - any job - contact us by phone or email. We are always ready to help you.

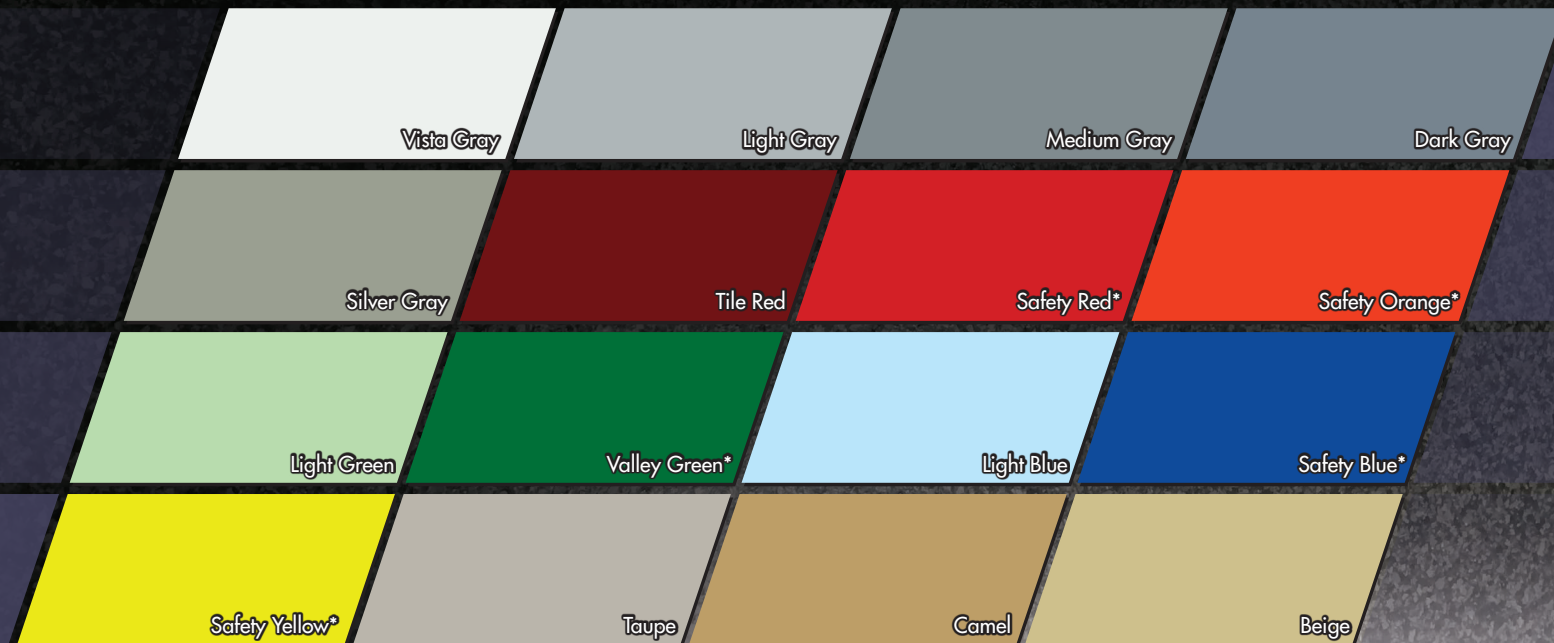


WearCOAT® FLOOR COATINGS

Textures



Colors



Color sample card deck available upon request.

* Deeply pigmented color available at slight additional cost; meets OSHA specifications.

Flakes and Quartz: Many other flake and quartz options are available beyond those shown above.

All Colors: formulated with lead-free and chromate-free pigments.

Custom Colors: Unique, specified, and matched colors are available at additional cost. Quantity minimums, matching charges, and additional delivery time will apply.

COLORS AND TEXTURES WILL VARY: The colors and textures shown above are printed representations of coating pigment coloration, and of various flake and quartz options. They are shown as accurately as printing will allow, but are not exact replicas of the color or texture achieved on any given job.



**COATINGS FOR
INDUSTRY, INC.**

319 Township Line Rd.
Souderton, PA 18964
www.cficoatings.com

P: +1 (215) 723-0919
F: +1 (215) 723-0911
TF: +1 (877) 723-0919
E: info@cficoatings.com



© 2021 Coatings For Industry, Inc. All Rights Reserved. Wearcoat®, Alseal®, and the Coatings For Industry Teardrop are registered trademarks for Coatings For Industry, Inc.